



oint
with



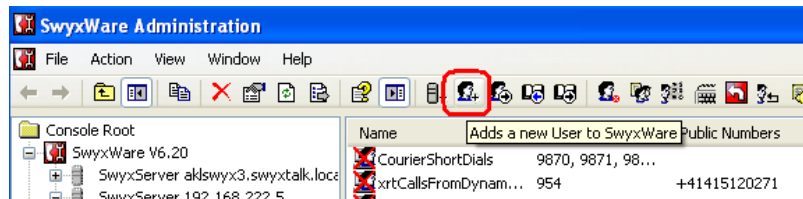
The snom MeetingPoint is a SIP conference phone that seamlessly integrates with your Swyx IP PBX.

With a reliable suppression of disturbing background noise and its excellent sound quality one can hold telephone conferences in large groups of up to 10 persons without affecting the intelligibility of the call. Three speakers, equipped with full duplex broadband audio (7 kHz, codec "G.722") provide balanced and full sound.

And it is already compatible to Microsoft Office Communications Server 2007 R2 with the snom OCS edition in parallel use to any SIP based IP pbx.

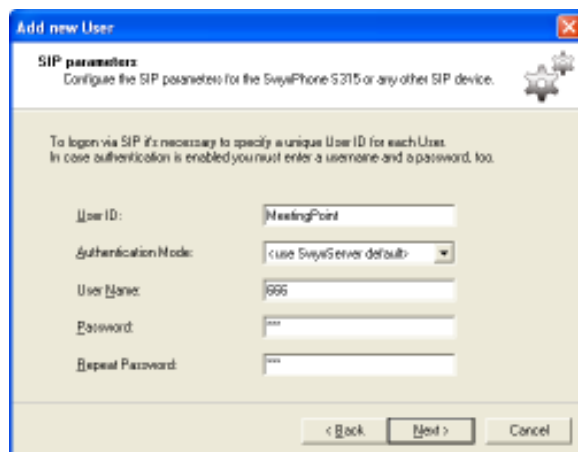
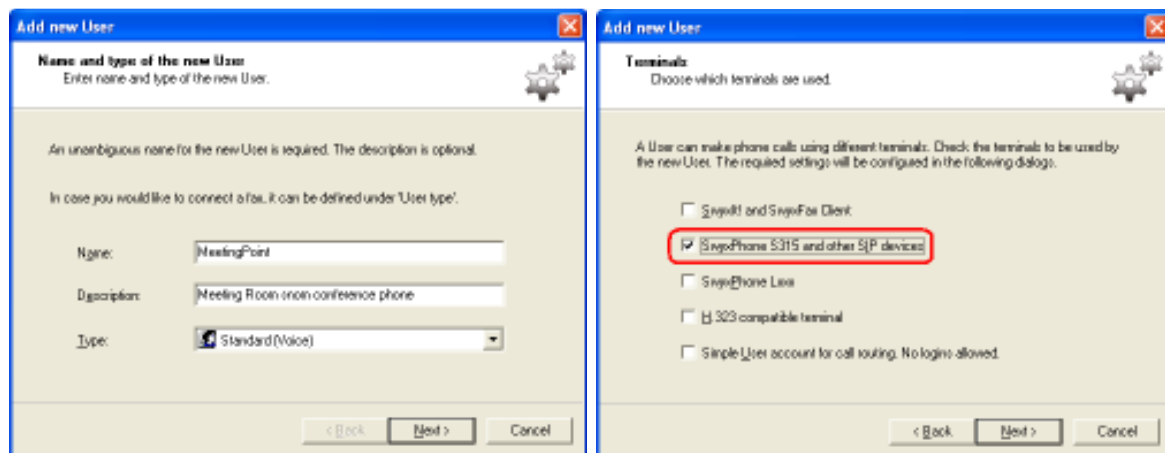
Create a SwyxWare User

Open SwyxWare Administration, go to **User** and click on **"Add new User"**

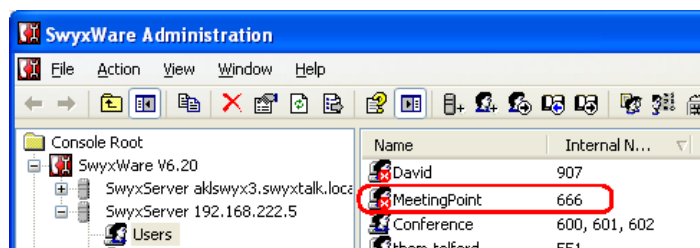


Follow the Wizard, starting with entering **Name**, **Description**, **Location** & internal **Number**

When choosing the terminals, ✓ **SwyxPhone S315 and other SIP devices**



Finish the Wizard until user is created.

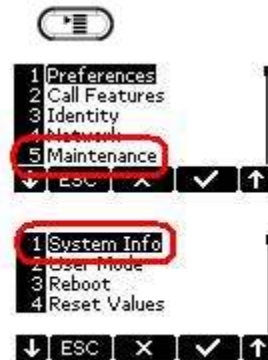


Access Meeting Point Unit.

When DHCP Server is available, Conference Unit will receive an IP address.

To find out the assigned address

1. click on the menu button on the phone
2. select "5" "Maintenance"
3. select then "1" "System Info".
4. Firmware, IP addr & MAC will show in display



```
snomMP-SIP 8.2.1
IP Adr: xxx.xxx.xxx.xxx
MAC: 000413320208
Rx: 88KB Tx: 80KB
RAM: 3MBof80 MB free
```

Next open a web-browser and Enter the IP address in the address field.

snom Meeting Point - Windows Internet Explorer

http://192.168.223.197/index.htm

File Edit View Favorites Tools Help

Parlay - Pbxnsip Wiki Free Hotmail Web Slice Gallery

Snom MeetingPoint/Documen... snom Meeting Point

Welcome to Your Phone! VERSION 8

HTTP Password not set!

Operation

- Home
- Directory

Setup

- Preferences
- Speed Dial
- Identity 1
- Identity 2
- Identity 3
- Identity 4
- Identity 5
- Identity 6
- Identity 7
- Identity 8
- Identity 9
- Identity 10
- Identity 11
- Identity 12
- Action URL Settings
- Advanced
- Trusted Certificates
- Software Update

Status

- System Information
- Log
- SIP Trace
- DNS Cache
- Subscriptions
- PCAP Trace
- Memory
- Settings

Manual

snom VoIP phones

snom OCS edition / create your own style

7/19/2009

cebit messe2 (test) snom OCS edition / GUI customization

snom phones snom 870, 820, 370 can be customized remotely. check our [wiki](#). For FW details drop us a mail: ocsedition@snom.com

This web interface makes it easy for you to set your phone up correctly and to access the advanced features.

To dial a number, just enter the number in the field below. You can enter a simple telephone number (e.g. 0114930398330) or URI like info@snom.com.

Dial a Number:

Dial Hangup

Outgoing Identity:

666@192.168.222.5 Set

[Dialed](#), [Missed](#), [Received](#)

Dialed Numbers ✕

Date	Time	Duration	Costs:	Local Identity	Number	
10/12/2009	6:07PM	0:02		666@192.168.222.5	00800400600	✕

Missed Calls ✕

Date	Time	Missed	Local Identity	Number
------	------	--------	----------------	--------

Received Calls ✕

Date	Time	Duration	Costs:	Local Identity	Number
------	------	----------	--------	----------------	--------

Click on: **Setup/Identity 1/Login**

snom Meeting Point - Windows Internet Explorer

http://192.168.223.197/line_login.htm?l=1

File Edit View Favorites Tools Help

Parlay - Pbxnsip Wiki Free Hotmail Web Slice Gallery

Snom MeetingPoint/Documen... snom Meeting Point

HTTP Password not set!

Configuration Identity 1

VERSION 8

Operation

- Home
- Directory
- Setup**
- Preferences
- Speed Dial
- Identity 1
- Identity 2
- Identity 3
- Identity 4
- Identity 5
- Identity 6
- Identity 7
- Identity 8
- Identity 9
- Identity 10
- Identity 11
- Identity 12
- Action URL Settings
- Advanced
- Trusted Certificates
- Software Update

Status

- System Information
- Log
- SIP Trace
- DNS Cache
- Subscriptions
- PCAP Trace
- Memory
- Settings

Manual

snom
VoIP phones

Login SIP NAT RTP

Login Information:

Identity active: on off ?

Displayname: Conference Phone ?

Account: 666 ?

Password: ***** ?

Registrar: 192.168.222.5 ?

Outbound Proxy: ?

Failover Identity: None ?

Authentication Username: ?

Mailbox: ?

Ringtone: Ringer 6 ?

Custom Melody URL: ?

Display text for idle screen: ?

XML Idle Screen URL: ?

Ring After Delay (sec): ?

Record Missed Calls: on off ?

Record Dialed Calls: on off ?

Record Received Calls: on off ?

< SIP User Name
< SIP User
< SIP User password
< IP address Swyx Server

Save Re-Register Play Ringer

Remove Identity

Remove All Identities

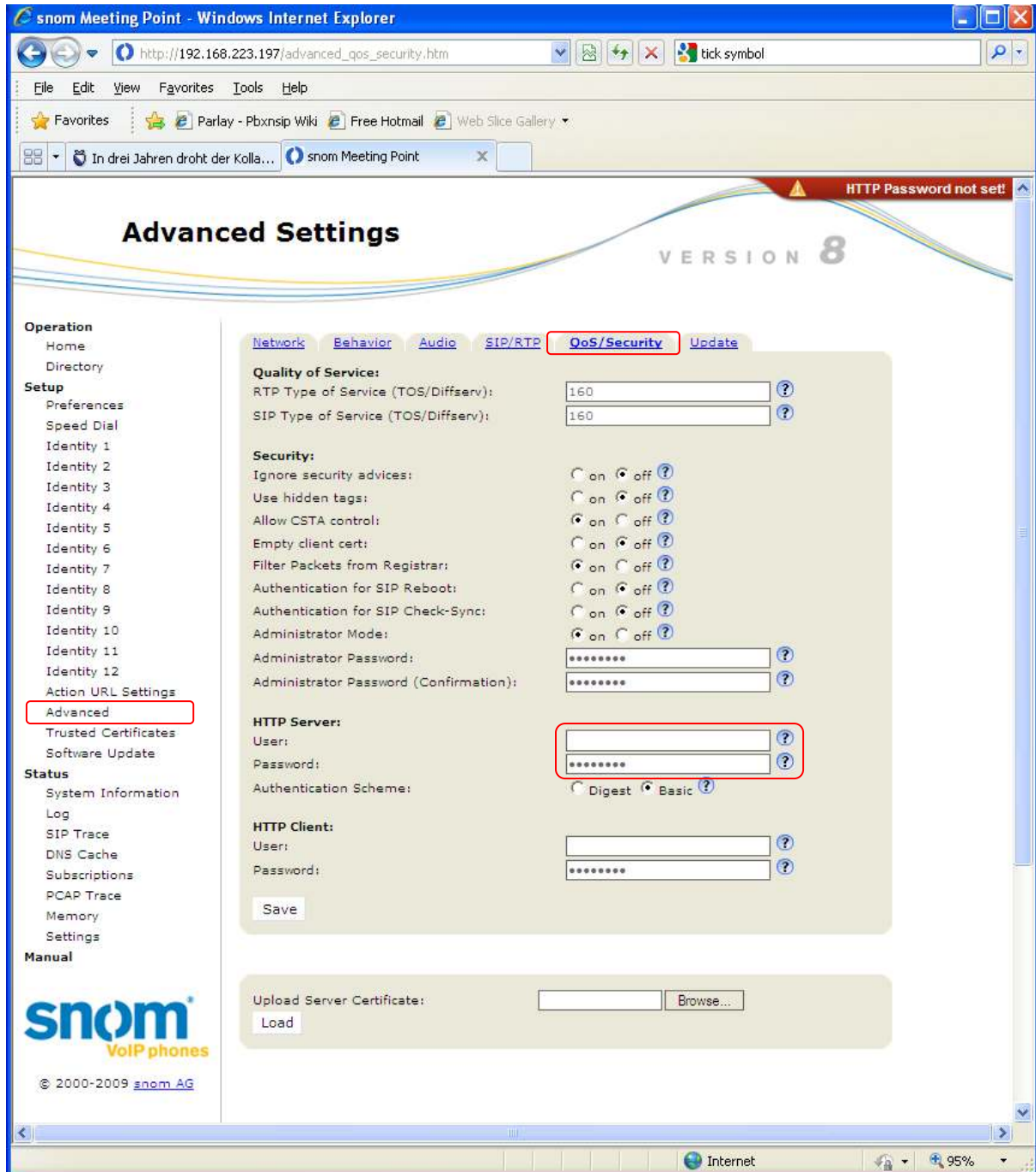
Go To **Setup/Identity 1/SIP**

The screenshot shows the 'Configuration Identity 1' web interface in Internet Explorer. The browser address bar shows 'http://192.168.223.197/line_sip.htm?l=1'. The page title is 'Configuration Identity 1' and 'VERSION 8'. A red warning banner at the top right says 'HTTP Password not set!'. On the left, a navigation menu includes 'Operation', 'Setup', 'Status', and 'Manual'. The 'Setup' menu is expanded, and 'Identity 1' is selected. The main content area is titled 'SIP Identity Settings' and includes tabs for 'Login', 'SIP', 'NAT', and 'RTP'. The 'SIP' tab is active. The settings include various fields and radio buttons for options like 'Music on hold server', 'Alert Info URL', 'User picture URL', 'Dial-Plan String', 'ENUM Support', 'Countrycode', 'Areacode', 'Proxy Require', 'Additional supported headers', 'Q-Value', 'Proposed Expiry', 'Auto Answer', 'Long SIP-Contact (RFC3840)', 'Support broken Registrar', 'Shared Line', 'Publish Presence on bootup', 'DTMF via SIP INFO', 'Send display name on INVITE', 'Extension Monitoring Call Pickup List', 'Extension Monitoring Call Pickup List URI', 'Contact List', 'Contact List URI', 'Server Type Support', 'Remove all bindings on unregister', 'Subscription Expiry (s)', and 'Enable hook flash'. The 'DTMF via SIP INFO' dropdown menu is highlighted with a red box and set to 'on'. A red annotation next to it reads '< Set DTMF via SIP INFO to on'. A 'Save' button is located at the bottom of the settings area. The footer of the page includes the snom logo and copyright information: '© 2000-2009 snom AG'.

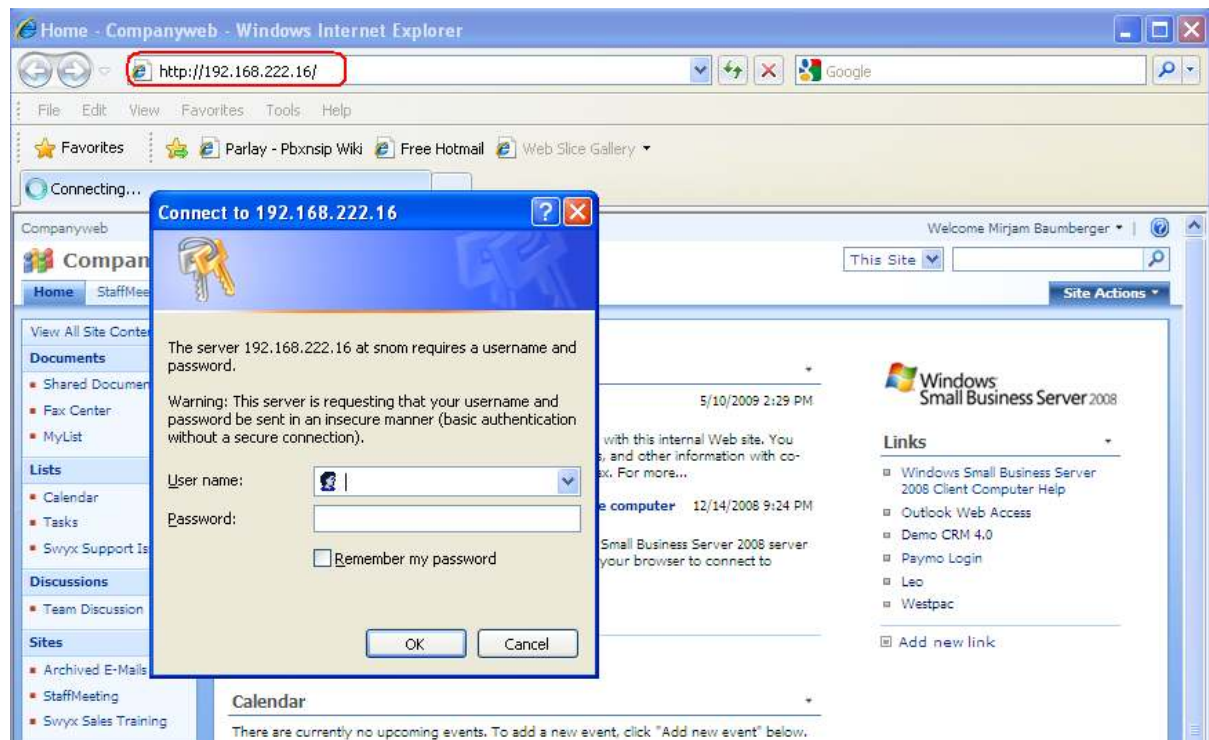
Set the HTTP Password

Go To **Advanced/QoS/Security**

Set a Username and Password at HTTP Server option to restrict access to the confirmation page



If you close and re-open your web-browser to access the MeetingPoint web interface, you will be asked for User name and Password



Further product help file can be found here : http://wiki.snom.com/Snom_MeetingPoint